



Concrete solutions. Meaningful tools. Real change.

MULTIPLE PATHWAYS TO HARM

A Domestic Violence-Informed Approach to Assessment



Concrete strategies.
Meaningful tools.
Real change.

Mission

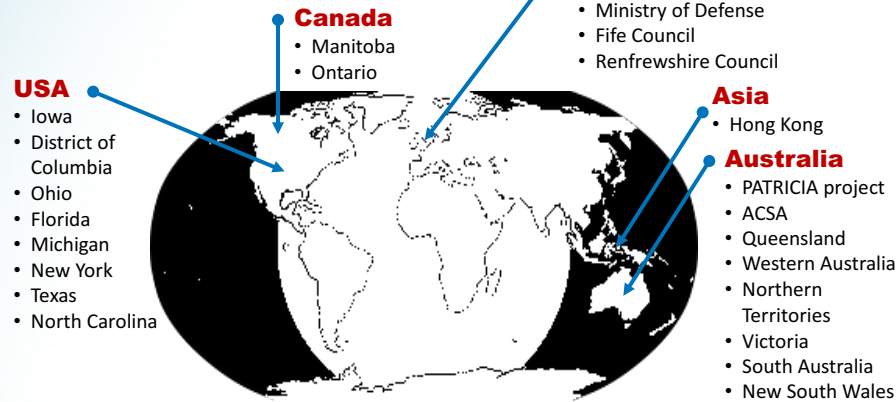
To create, nurture and sustain a global network of domestic violence-informed child welfare professionals, communities and systems.

© Copyright 2016 Safe & Together Institute, formerly David Mandel Associates, LLC. All rights reserved. Do not reproduce without permission.



Where is Safe & Together?

Active in 2016



© Copyright 2016 Safe & Together Institute, formerly David Mandel Associates, LLC. All rights reserved. Do not reproduce without permission.



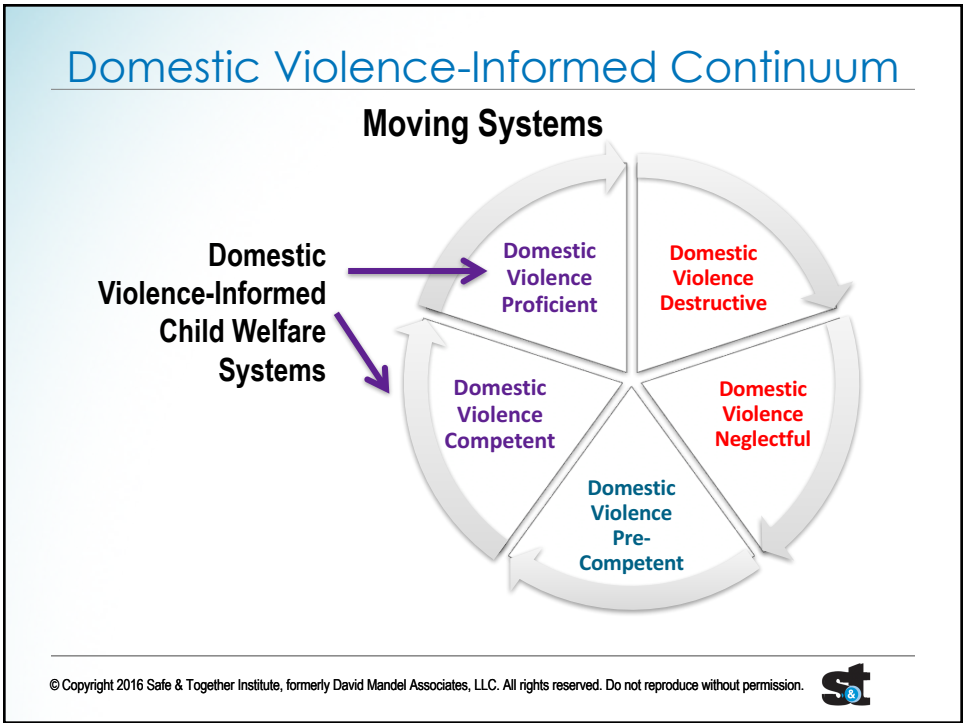
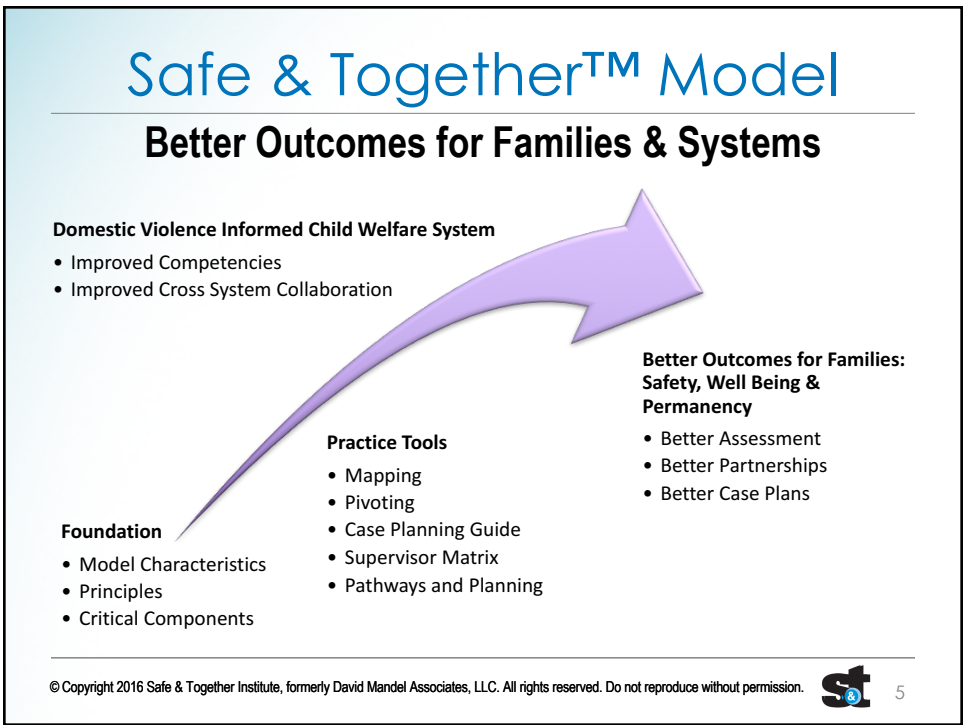
Safe & Together Institute

What we offer

- ✦ Organizational Assessment & Consultation
- ✦ Core, Advanced Practice Training
- ✦ Mapping and Other Practice Tools
- ✦ Subject Matter (Specialist), Women's Sector and Trainer Certification
- ✦ Evaluation Services
- ✦ Online Courses

© Copyright 2016 Safe & Together Institute, formerly David Mandel Associates, LLC. All rights reserved. Do not reproduce without permission.





A Perpetrator Pattern Approach

Review

✦ Domestic violence-informed practice requires:

- ✦ An understanding that children are best served when they can be kept Safe & Together with the non-offending parent
- ✦ Assessment needs to start with the domestic violence perpetrator's pattern and its impact on child and family functioning
- ✦ Understanding domestic violence perpetration as a parenting choice.
- ✦ Strength-based partnerships with the adult survivor

© Copyright 2016 Safe & Together Institute, formerly David Mandel Associates, LLC. All rights reserved. Do not reproduce without permission.



7

“Old” Paradigm is Limited

Moving away from “Exposure Only” approach

“Old” Paradigm

- ✦ **Did the children see the violence?**
- ✦ **Did they hear the violence?**
- ✦ **Were they physically injured during the violence or in danger of being physically harmed by the violence?**

These are still critical to assessment but.....

© Copyright 2016 Safe & Together Institute, formerly David Mandel Associates, LLC. All rights reserved. Do not reproduce without permission.



8

“Old” Paradigm is Limited

Moving away from “Exposure Only” approach

They have these limitations....

- ✦ A failure to fully integrate child abuse, child neglect and domestic violence issues
- ✦ A failure to integrate the domestic violence perpetrator’s domestic violence, substance abuse, and mental health issues
- ✦ Keeps the focus on incidents of violence versus larger patterns of coercive control
- ✦ Fails to account for the cascading effects of violent and controlling behavior on day to day child and family functioning
- ✦ Doesn’t direct us to fully holding the perpetrator accountable as a parent
- ✦ Doesn’t lay the best foundation for developing a partnership with the adult survivor
- ✦ May hinder the development of the best possible case plan

© Copyright 2016 Safe & Together Institute, formerly David Mandel Associates, LLC. All rights reserved. Do not reproduce without permission.



9

Domestic Violence-Informed Assessment

Multiple Pathways to Harm Approach

Creates a more accurate and comprehensive assessment by:

- ✦ Examining more domains of the perpetrator’s adult and parental functioning
- ✦ Examining more domains of family functioning
- ✦ Tying together the domestic violence perpetrator behavior with other issues such as housing instability and adult survivor parental functioning
- ✦ Assistance in connecting the dots between the perpetrator’s pattern of behavior and child behavioral, emotional, physical health and development

A “Multiple Pathways to Harm” approach increases accountability for the perpetrator as a parent by providing a method to connect his choices and behaviors to:

- ✦ child physical and emotional safety,
- ✦ healing from trauma and
- ✦ stability and nurturance:

© Copyright 2016 Safe & Together Institute, formerly David Mandel Associates, LLC. All rights reserved. Do not reproduce without permission.



10

Coercive Control

It's not just violence

Coercive control is important because it helps us:

- Implement psycho-social assessments that span both criminal and noncriminal abusive behaviors
- Identify the potential for post separation danger to both adult and child survivors
- Develop safety and case plans that create real change in the lives of families
- Understand the power being exercised by perpetrators in different social and cultural contexts

© Copyright 2016 Safe & Together Institute, formerly David Mandel Associates, LLC. All rights reserved. Do not reproduce without permission.



11

Coercive Control

It's not just violence

Coercive control can involve some of the following behaviors:

- Physical violence
- Threats of violence
- Harassment
- Verbal abuse
- Monitoring and interfering with phone calls, texts and other contacts with friends and family
- Sexual abuse of all types from sexual degrading comments to rape
- Controlling access to money, ability to work or other sources of financial agency
- Setting rules and unrealistic expectations for the behavior of others

© Copyright 2016 Safe & Together Institute, formerly David Mandel Associates, LLC. All rights reserved. Do not reproduce without permission.



12

Negative Effects on Child

What are the negative effects of the domestic violence perpetrator's behavior pattern on child and family functioning?*

***Coercive control and actions taken to harm the child**

(1st, 2nd and 4th critical components)

Multiple Pathways to Harm

Perpetrator's Pattern

- Coercive control toward adult survivor
- Actions taken to harm children

Children's Trauma & Safety

- Victim of physical abuse
- Seeing, hearing or learning about the violence

Effect on Partner's Parenting

- Depression, PTSD, anxiety, substance abuse
- Loss of authority
- Energy goes to addressing perpetrator instead of children
- Interference with day to day routine and basic care

Effects on Family Ecology

- Loss of income
- Housing instability
- Loss of contact with extended family
- Educational and social disruptions

Harm to Child

- Behavioral, Emotional, Social, Educational
- Developmental
- Physical Injury

Interventions

What are we doing to intervene with him to improve child and family functioning?*

***Safety**
healing from trauma
stability
nurturance

© Copyright 2016 Safe & Together Institute, formerly David Mandel Associates, LLC. All rights reserved. Do not reproduce without permission.



**Domestic Violence-Informed
E-LEARNING COURSES**
Meaningful tools for real change

Contact



Concrete strategies.
Meaningful tools.
Real change.

860-319-0966 (USA) | safeandtogetherinstitute.com

Like on Facebook

<http://www.facebook.com/safeandtogether>

Follow on Twitter

<https://twitter.com/SafeandTogether>

Follow on YouTube

<https://youtube.com/SafeandTogetherModel>

© Copyright 2016 Safe & Together Institute, formerly David Mandel Associates, LLC. All rights reserved. Do not reproduce without permission.

